



**ABAX
KINGFISHER**



PIP

PRODUCT DATA SPECIFICATION

Pip 2 & Pip 3

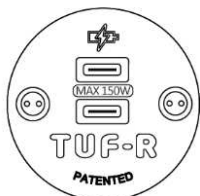
| Description | | | | | | | | | |
|---|---|--------------|--------------|---|---|--|--|---|---|
| SIZES & DIMENSIONS | <table border="1"> <thead> <tr> <th><u>Pip 2</u></th> <th><u>Pip 3</u></th> </tr> </thead> <tbody> <tr> <td>Overall Dimensions: 118mmW x 60mmD x 60mmH</td> <td>Overall Dimensions: 176mmW x 60mmD x 60mmH</td> </tr> <tr> <td>Flat Cutout: 30mmT (-0mm + 2mm)</td> <td>Flat Cutout: 30mmT (-0mm + 2mm)</td> </tr> <tr> <td>Screw Clamps for Surfaces: 3mm – 30mmT</td> <td>Screw Clamps for Surfaces: 3mm – 30mmT</td> </tr> </tbody> </table> | <u>Pip 2</u> | <u>Pip 3</u> | Overall Dimensions: 118mmW x 60mmD x 60mmH | Overall Dimensions: 176mmW x 60mmD x 60mmH | Flat Cutout: 30mmT (-0mm + 2mm) | Flat Cutout: 30mmT (-0mm + 2mm) | Screw Clamps for Surfaces: 3mm – 30mmT | Screw Clamps for Surfaces: 3mm – 30mmT |
| <u>Pip 2</u> | <u>Pip 3</u> | | | | | | | | |
| Overall Dimensions: 118mmW x 60mmD x 60mmH | Overall Dimensions: 176mmW x 60mmD x 60mmH | | | | | | | | |
| Flat Cutout: 30mmT (-0mm + 2mm) | Flat Cutout: 30mmT (-0mm + 2mm) | | | | | | | | |
| Screw Clamps for Surfaces: 3mm – 30mmT | Screw Clamps for Surfaces: 3mm – 30mmT | | | | | | | | |
| MATERIALS | The body is made of nylon, while the socket fascia is constructed from polycarbonate | | | | | | | | |
| CONFIGURATIONS | <p><u>Pip 2</u></p> <ul style="list-style-type: none"> 1x GPO and 1x TURF with 2000mm lead and 10A three-pin plug 1x GPO and 1x TURF with 800mm lead and J coupler <p><u>Pip 3</u></p> <ul style="list-style-type: none"> 2x GPOs and 1x TURF with 2000mm lead and 10a three-pin plug 2x GPOs and 1x TURF with 800mm lead and J coupler | | | | | | | | |
| FEATURES | <p>Install flush for a sleek look or at an 8° angle for easy access</p> <p>Configurable with AC power, TUF-R USB, or ARC wireless charging</p> <p>TUF-R modules can be swapped in under five minutes—no power down or electrician needed</p> <p>The included TUF replacing tool allows hassle-free module swap-outs</p> <p>Works with ARC wireless modules for fast, easy charging</p> <p>USB modules fast-charge smartphones and laptops</p> <p>ISO9001-tested for visuals, power, and USB output</p> <p>Wireless charging system safely controls heat</p> <p>Supports various hardwired power cord setups</p> <p>Perfect for offices, classrooms, libraries, and breakout areas</p> | | | | | | | | |
| FINISH | <p>White</p> <p>Black</p> | | | | | | | | |
| WARRANTY | 10 Years | | | | | | | | |
| LEAD TIME | 49 Days | | | | | | | | |
| CUSTOMISABLE | N/A | | | | | | | | |
| ACCESSORIES | TUF replacing tool | | | | | | | | |

Due to constant innovation, products may be subject to design and specification changes without notice. Copyright © 2025

Common Modular Components



TUF-R USB C+C (30W)
Charging Module



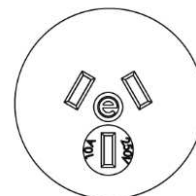
TUF-R HP USB C+C (150W)
Charging Module
Requires a PSU



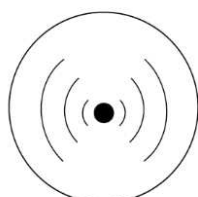
TUF-R USB A+C (25W)
Charging Module



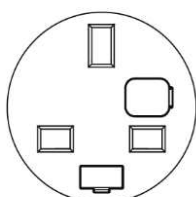
TUF-R HP USB A+C (72W)
Charging Module
Requires a PSU



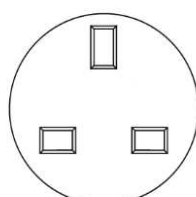
AUSTRALIA / NZ GPO



WIRELESS CHARGER

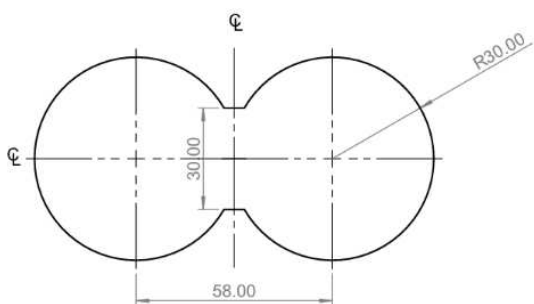
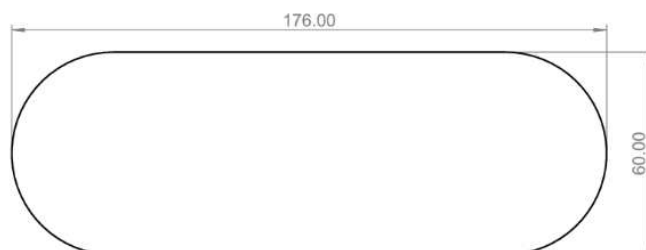
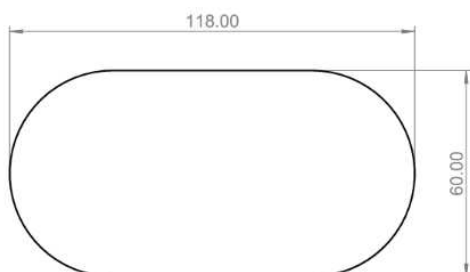


UK FUSED GPO

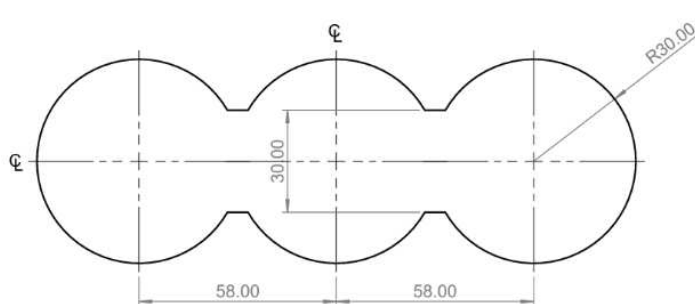


UK UNFUSED GPO

Cutout Drawings



Pip 2



Pip 3

Due to constant innovation, products may be subject to design and specification changes without notice. Copyright © 2025