



**ABAX
KINGFISHER**



GRAND

PRODUCT DATA SPECIFICATION

Grand Booth

Description		
DIMENSIONS	<u>Small</u> 2270mmDia x 1400mmH	<u>Large</u> 2270mmDia x 2270mmH
FABRIC METERAGE	N/A	
MATERIALS & CONSTRUCTION	The booth is made from iron steel frame, filled with PU foam, integrated with LED lights, and finished in high-quality upholstery	
FEATURES	<p>Suitable for creating private or semi-private seating areas in spaces like lounges, waiting rooms, offices, and more.</p> <p>The booth features integrated LED lights, adding a touch of ambiance and creating a unique atmosphere that enhances the visual appeal of the space.</p> <p>Available in two different sizes, the Grand Booth allows you to choose the right configuration to suit your space and seating requirements, whether for intimate conversations or group gatherings</p> <p>The Grand Booth's dimensions and design offer a unique opportunity to create distinctive seating arrangements that promote comfort, privacy, and aesthetic cohesion within the room</p>	
WARRANTY	10 Years	
LEAD TIME	49 Days	
FINISH	Sunday Range	
CUSTOMISABLE	N/A	
CERTIFICATIONS	N/A	

Small

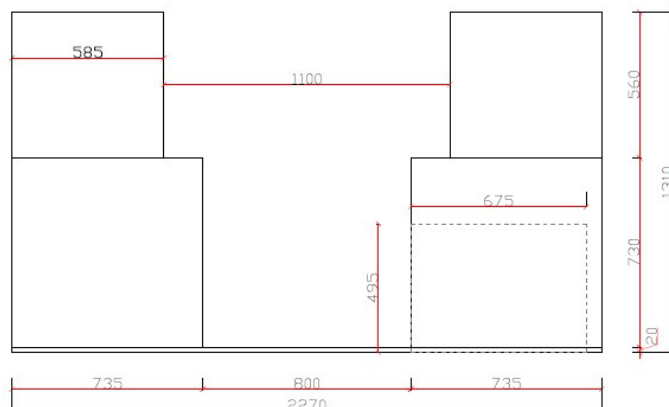
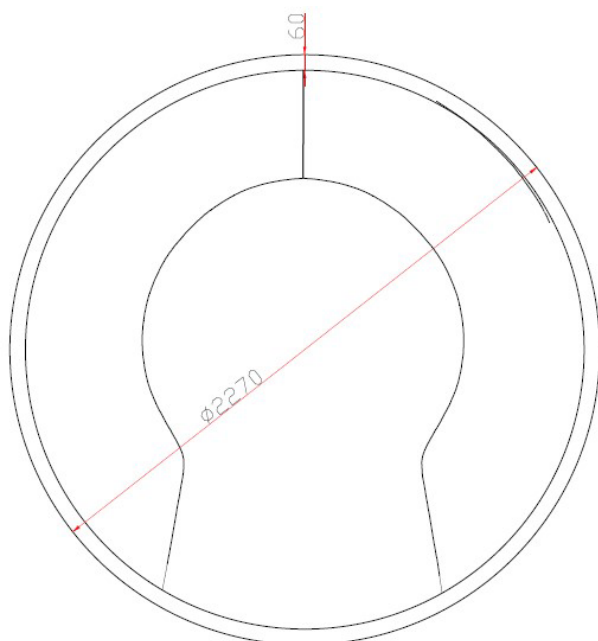


Large

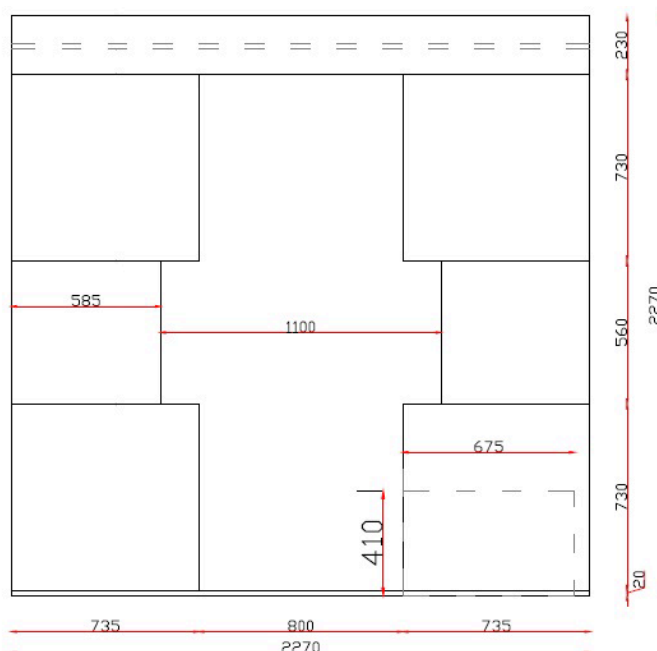
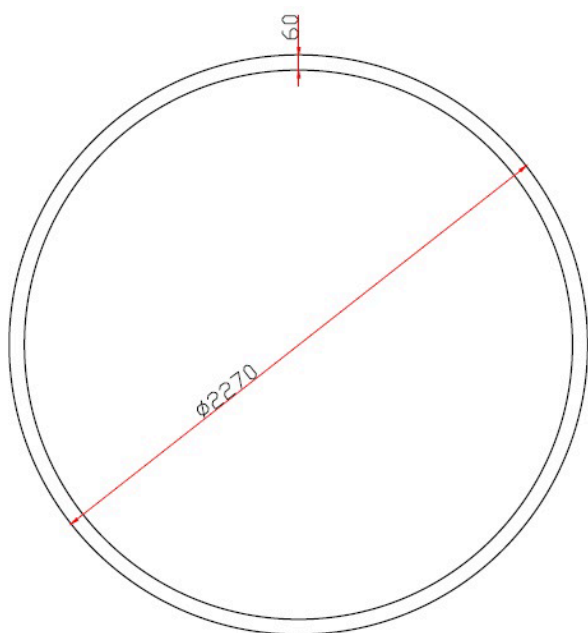


Due to constant innovation, products may be subject to design and specification changes without notice. Copyright © 2023

Small



Large



Due to constant innovation, products may be subject to design and specification changes without notice. Copyright © 2023

Sunday Range



Due to constant innovation, products may be subject to design and specification changes without notice. Copyright © 2023