



**ABAX
KINGFISHER**



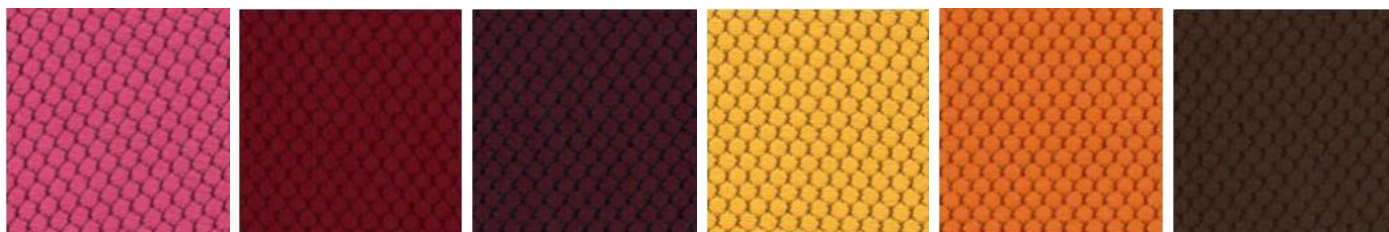
ARIAH 4 LEG STOOL
PRODUCT DATA SPECIFICATION

Ariah Stool

Description		
DIMENSIONS	Overall Dimensions: 430mmW x 430mmD x 1080mmH	Overall Dimensions: 430mmW x 430mmD x 1170mmH
	Seat Height: 650mmH	Seat Height: 750mmH
MATERIALS & CONSTRUCTION	Single piece injection moulded polypropylene shell Mild Steel framework Fully welded heavy-duty steel frame	
ADJUSTMENT	N/A	
FEATURES	Backrest designed for flexible movement	Stackable
	Shell designed with superior lumbar support curve	Family of bases available
	Rage of sizes suitable for Preschool right through to University	Epoxy coated base to reduce scratching
		Flex-Back the reduces ability to rock back on two legs
WARRANTY	10 Years	
LEAD TIME	35 Working Days (stock)	12 – 14 Weeks (indent)
FINISH	Shell	Olive
	Red	Mango
	Blue	White
	Black	Frame
	Grey	Silver Powdercoat
CUSTOMISABLE	Custom powder-coated base available – extended lead times & costs apply	
ACCESSORIES	Upholstered seat pads available on request – additional lead times & costs apply	
CERTIFICATIONS		



Upholstery Finishes – Arianh Seat Pad



Magenta

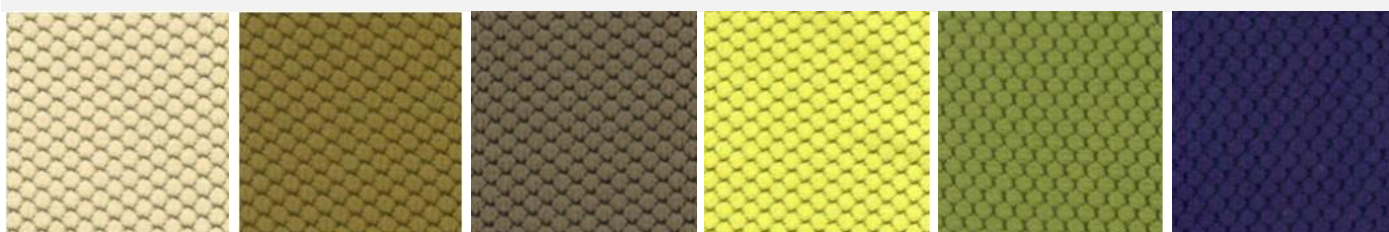
Deep Red

Burgundy

Honey

Mandarin

Cocoa



Buttercup

Khaki

Taupe

Mustard

Olive

Navy Blue



Teal Blue

Steel Blue

Royal Blue

Snowy

Slate Grey

Black

Arianh Shell Colours



Black

Grey

Blue

Olive

Mango

Red

White